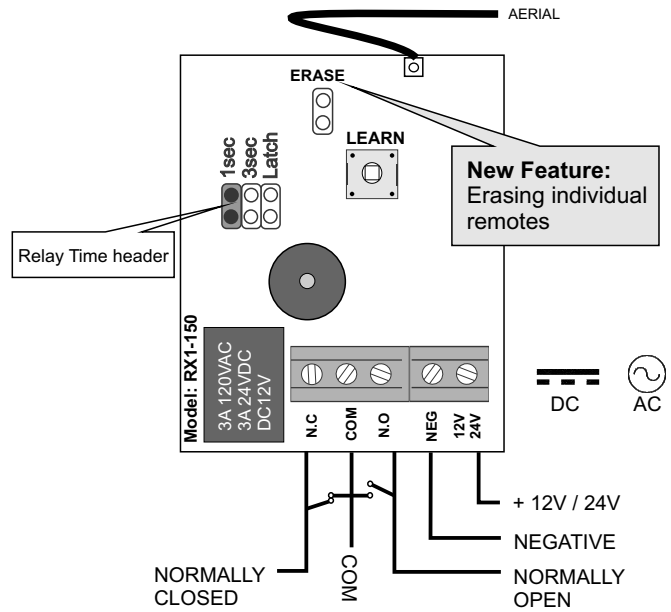
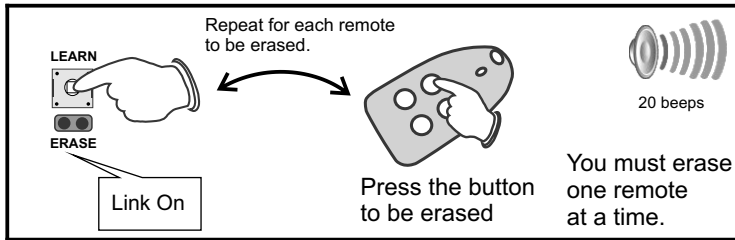


## SPECIFICATIONS:

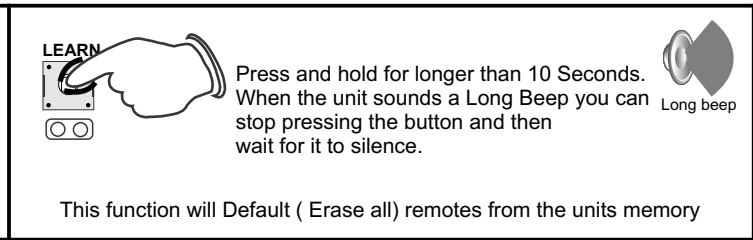
Encryption.....	Keeloq Code-Hopping
Frequency.....	403.55MHz
Receiving range.....	150m
Power input range.....	10 ~ 26V AC/DC
Current drain.....	13mA, 12VDC
Memory capacity.....	80 Remotes per Channel
Relay output times.....	0.5 second momentary
.....	1 second momentary
.....	3 / 30 second momentary
.....	Latching
.....	On / Off function
.....	1 & 3 Minute
Dimensions.....	65 X 48 x 20mm
Weight Packed.....	0.050kg / 50grams
Warranty.....	1 year
PCB Revision no.....	RX1-150_V3.02
Release date.....	Feb 2013



## Erasing Individual remotes.



## Defaulting.

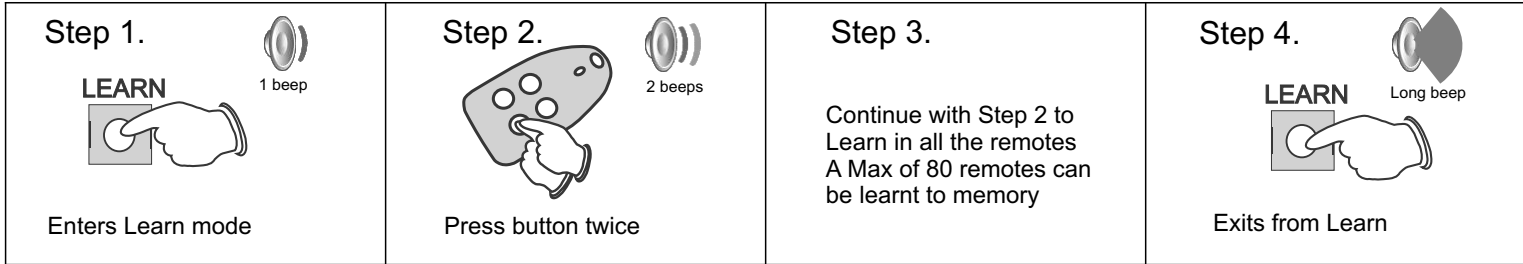


For more info visit our web site: [www.sherlotronics.com](http://www.sherlotronics.com) Technical help :- 011-462-5101

Feb 2013

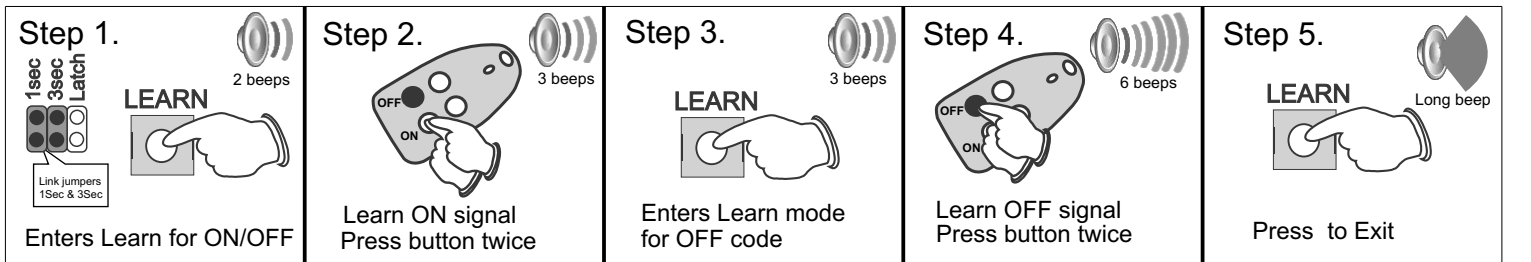
## Programming

Please follow the steps below to Learn in remotes to the receiver. The unit can store up to 80 remotes. When memory has reached its limit the unit will automatically exit out of program mode and sound a long beep. The unit auto exits after 10 seconds.



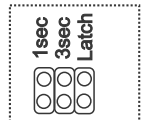
## Programming On/Off Function

This function enables the receiver to be programmed with a button to turn the relay ON and a different button to turn the relay OFF.



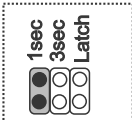
## Relay time settings

### 0.5 Second



Garage door automation

### 1 Second



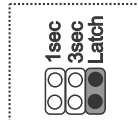
Gate & garage door automation

### 3 Seconds



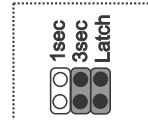
Panic on alarm panel

### Latch & Unlatch



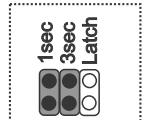
Arming & Disarming alarm panels

### 3 Minute



Siren output or beam bypass

### On / Off



Code 1 = ON  
Code 2 = OFF

For more info visit our web site: [www.sherlotronics.com](http://www.sherlotronics.com) Technical help :- 011-462-5101

Feb 2013